



# KIT Ø18

**ALBUZ**  
ITALIAN  
EXCLUSIVE  
DISTRIBUTOR

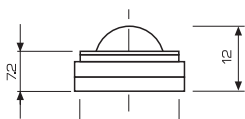


kit Ø18

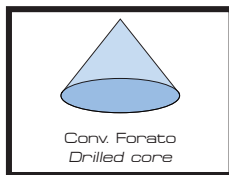
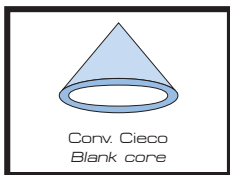
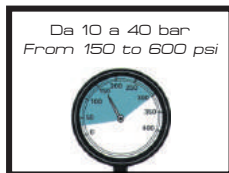
**Materiali:** acciaio inox - allumina.  
**Impiego:** su getti atomizzatori per trattamenti fungicidi ed insetticidi.  
**Confezioni da:** 100

**Materials:** stainless steel - alumina.  
**Use:** fungicide and insecticide applications on air blast sprayers.

**Pieces per box:** 100



75.605.47 Ø18



## COME SI ORDINA / HOW TO ORDER

	Ricambi Spare parts	Foro mm Hole mm	
1	70.601.37	-	25
2	70.1802.1	Ø0.8	25
	70.1802.2	Ø1.0	25
	70.1802.3	Ø1.2	25
	70.1802.4	Ø1.5	25
	70.1802.5	Ø1.8	25
	70.1802.6	Ø2.0	25
3	70.601.36	-	25
	70.204.25	cieco / blank	25
4	70.204.29	Ø1.0	25
	70.204.26	Ø1.2	25
	70.204.27	Ø1.5	25
	70.204.28	Ø1.8	25
	70.508.10	-	25

FILTRO STRAINER	COME SI ORDINA HOW TO ORDER			Pressione bar	Portata l/min.	Angolo di spruzzo Spray angle	Pressure psi	Capacity USGal/min
	KIT	Ugello mm. Tip mm.	Convogliatore mm. Core dia. mm.					
MESH 40	70.810.11	Ø 0.8	cieco blank	10	0.98	40°	150	0.26
				15	1.17	40°	220	0.31
				20	1.26	45°	300	0.33
				30	1.54	45°	450	0.41
				40	1.76	45°	600	0.46
	70.810.49	Ø 0.8	Ø 1.0	10	1.13	20°	150	0.30
				15	1.38	20°	220	0.37
				20	1.60	25°	300	0.43
				30	1.96	25°	450	0.53
				40	2.26	25°	600	0.61
	70.810.12	Ø 1.0	cieco blank	10	1.02	40°	150	0.27
				15	1.20	40°	220	0.32
				20	1.40	45°	300	0.37
				30	1.74	50°	450	0.46
				40	2.04	50°	600	0.54
	70.810.50	Ø 1.0	Ø 1.0	10	1.80	25°	150	0.48
				15	2.20	25°	220	0.59
				20	2.53	30°	300	0.68
				30	3.12	30°	450	0.84
				40	3.60	30°	600	0.97
	70.810.13	Ø 1.2	cieco blank	10	1.32	50°	150	0.35
				15	1.62	50°	220	0.43
				20	1.86	55°	300	0.49
				30	2.19	55°	450	0.58
40				2.55	60°	600	0.67	
70.810.51	Ø 1.2	Ø 1.0	10	2.40	35°	150	0.65	
			15	2.90	35°	220	0.77	
			20	3.37	40°	300	0.91	
			30	4.13	40°	450	1.11	
			40	4.78	40°	600	1.28	
70.810.14	Ø 1.2	Ø 1.2	10	2.53	45°	150	0.67	
			15	3.10	45°	220	0.82	
			20	3.55	45°	300	0.94	
			30	4.35	40°	450	1.15	
			40	5.00	40°	600	1.32	
70.810.15	Ø 1.5	cieco blank	10	2.25	50°	150	0.59	
			15	2.75	50°	220	0.73	
			20	3.18	55°	300	0.84	
			30	3.90	60°	450	1.03	
			40	4.40	60°	600	1.16	
70.810.52	Ø 1.5	Ø 1.0	10	3.71	40°	150	0.99	
			15	4.35	40°	220	1.15	
			20	4.95	45°	300	1.34	
			30	5.95	45°	450	1.72	
			40	6.73	45°	600	1.99	
70.810.16	Ø 1.5	Ø 1.2	10	3.75	55°	150	1.01	
			15	4.44	55°	220	1.18	
			20	5.14	50°	300	1.38	
			30	6.10	50°	450	1.64	
			40	6.93	50°	600	1.86	
70.810.17	Ø 1.5	Ø 1.5	10	3.87	40°	150	1.04	
			15	4.61	45°	220	1.23	
			20	5.30	45°	300	1.42	
			30	6.43	45°	450	1.73	
			40	7.31	45°	600	1.96	
70.810.18	Ø 1.8	cieco blank	10	3.15	45°	150	0.83	
			15	3.85	50°	220	1.02	
			20	4.45	55°	300	1.18	
			30	5.45	55°	450	1.44	
			40	6.25	60°	600	1.65	
70.810.19	Ø 1.8	Ø 1.5	10	5.10	50°	150	1.35	
			15	6.25	50°	220	1.65	
			20	7.44	50°	300	1.95	
			30	8.52	45°	450	2.25	
			40	10.40	45°	600	2.75	
70.810.20	Ø 1.8	Ø 1.8	10	6.44	50°	150	1.70	
			15	7.85	50°	220	2.07	
			20	9.10	45°	300	2.40	
			30	11.10	40°	450	2.93	
			40	12.80	40°	600	3.38	
70.810.21	Ø 2.0	cieco blank	10	3.28	50°	150	0.95	
			15	4.02	50°	220	1.05	
			20	4.60	55°	300	1.22	
			30	5.65	55°	450	1.50	
			40	6.55	60°	600	1.73	
70.810.22	Ø 2.0	Ø 1.8	10	7.00	50°	150	1.88	
			15	8.60	50°	220	2.28	
			20	9.90	45°	300	2.66	
			30	12.10	40°	450	3.25	
			40	14.00	40°	600	3.83	